

WILDHONEY
PERFORMING ARTS



HIGH PRIEST AND HIGH PRIESTESS

PRESS KIT

Bookings and enquiries
Eloise Wood 0400145168
wildhoneyperformingarts@gmail.com
www.wildhoney.net.au



www.facebook.com/wildhoneyperformingarts



www.instagram.com/wildhoneyperformingarts

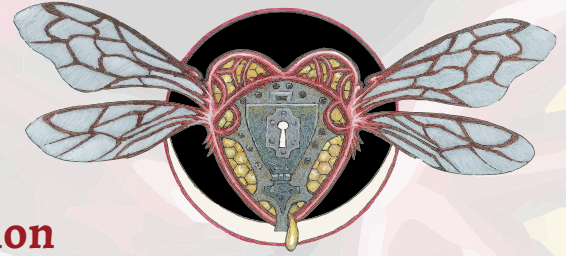


www.vimeo.com/wildhoneyperformingarts



High Priest and High Priestess

Stiltwalking Mobile Act



Performance Description

Delve down into the darkness. Slip between the veils...

Be transported into a realm of ritual, ceremony, and summoning of old magics.

Step into their unique slice of the Underworld.

High Priest and High Priestess is a two-person roving stilt performance that can be performed day or night but is best suited after dark, indoors or out, to a wide demographic ranging from children to adults. With eye-catching bone and skull staffs, headpieces, and illuminated props, the costumes reference All Hallows Eve, Celtic Samhain, and Día De Los Muertos - Day of the Dead.

These mythical characters and masters of ceremony are based on ancient Greek Gods and Goddesses. The Priestess is the mother of dreams, bringer of light and illumination, the Priest, guardian of the underworld, shadow and night.



Working with WildHoney

Mobile Act Information

Non-verbal Street Theatre

WildHoney does not use spoken word but relies on movement and visual stimuli as a key technique of storytelling and communication, making it accessible and super friendly to all walks of life.

Relaxed Performances

WildHoney offers specially adapted performances for adults and children, who might benefit from a more relaxed experience, i.e. low stimulus, non-verbal. This type of performance specifically appeals to people with autism, communication disorders, learning difficulties, and dementia.

Audio and Live Sound

WildHoney mobile performances generally operate without sound however a pre-recorded soundtrack can be presented on request.

Stage Lighting

The costumes are designed with inbuilt lights for outdoor street performances and therefore don't require external lighting.

Performance Duration

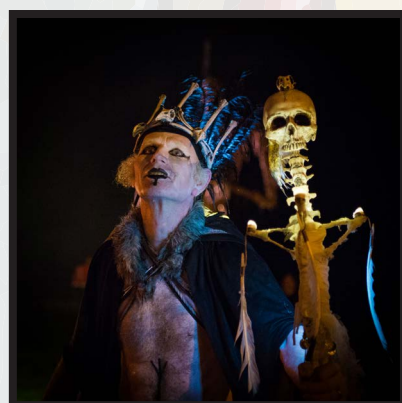
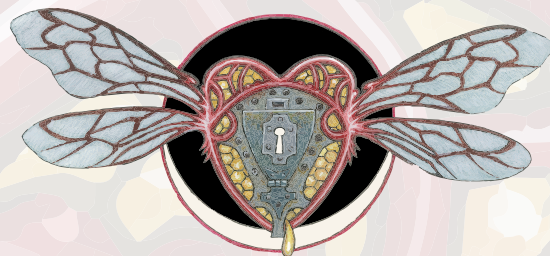
WildHoney mobile acts are performed as 45-minute sets - this is flexible and can be tailored and repeated throughout the event. The performers take a break for a minimum of 20 minutes between sets.

Insurance

WildHoney has Public Liability Insurance.

Cost

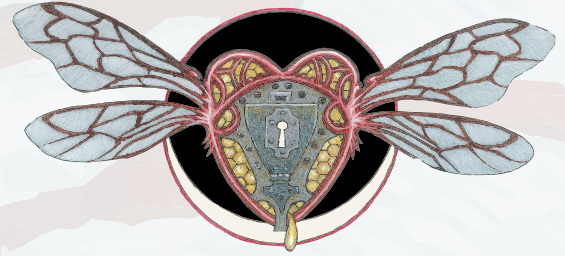
WildHoney's mobile acts fees are variable and dependent on factors such as performance duration, number of performers, travel, accommodation, and per diems. Please contact us for a full price list or quote.



Working with WildHoney

Stilt Requirements

WildHoney stilt performers are easy to work with and adaptable to a great range of environments. We walk comfortably in crowds, indoors and out, can squeeze through doorways, navigate a wide range of surfaces and tough it out in most weather.



Stilt Up

WildHoney works with tall stilts and we often get asked how we get up and down! A crate, sturdy table, or even a car bonnet will do the trick.

Height

Each of the WildHoney characters measures approx 2.5 metres in total height except for The Illuminates - 3.2m. Please take this into account when booking and check the height of your ceiling, decor, and other areas where rigging is hung.

Performance Area

When presenting WildHoney mobile acts, the stilt performers need enough room to move comfortably between people and a large flat, dry area to walk in. If performing at night, please ensure there is an adequately lit pathway to and from the performance area.

Safety

A stage manager/security person must be present at all times. This entails the safety of the stilt performers and the public during the performance. A safe distance between the performers and public must be maintained at all times unless the performers choose to interact directly with select audience members.

Surface Requirements

WildHoney stilt performers cannot perform on wet, slippery, muddy, or deep sandy surfaces, and any sign of liquid on a glossy surface is extremely hazardous to stilt walkers.

Steps

WildHoney stilt performers cannot walk up or down long flights of steps. Please make sure the pathway between backstage and dressing rooms does not involve steps, and can be avoided in the performance area.

Dressing Room Requirements

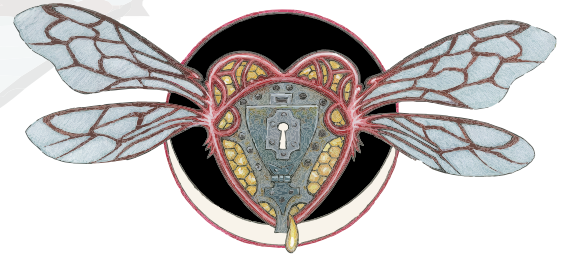
A dressing room must be supplied as close to the performance area as possible. Whilst this room does not have to be high, it must be private, have power, drinking water, lighting, 2 x trestle tables, 3 x chairs, bin, heater/cooling if available, costume hanging rack, and close access to toilet facilities.

Weather Alerts

WildHoney stilt performers cannot perform in rain, extreme heat (34 degrees +), or gale-force winds. WildHoney will be at the event (unless cancelled) and wait to be rescheduled (by negotiation) on the day of performance. If there is no possibility of performance (and those appearances are cancelled) WildHoney will invoice for 100% of the total fee.



High Priest and High Priestess Performance Biography



Collaborations and Commissions

The High Priest and High Priestess characters were created for The Sacrifice / Candescence, a two-part outdoor performance for WinterWild Apollo Bay Festival, where over 500 audience members braced themselves for the cold, sleet, and rain in an unforgettable theatrical experience. The performance was shaped around the festival's theme of Death and Birth and was directed by Roderick Poole in collaboration with Eloise Wood and WildHoney Performing Arts, local Artists, and the good folk of the Otways.

Performance History - 2018

WinterWild Festival, Apollo Bay,
Dogwatch, Apollo Bay Foreshore,
Performance Collaboration,
- *The Sacrifice*, August 11
- *Candescence*, August 23

WinterWild Festival, Apollo Bay,
Apollo Bay P-12 College,
- *Children's Mask, Dance and Choreography Workshop*, July 09



Hive Creative Team

Eloise Wood - founder and guide, concept designer,
creative director, choreographer, children's workshop
facilitator

Jen Farthing - creative garment designer and maker

Hoya Wolfgang - founder, props, headpiece designer
and maker

Hive Artists

Eloise Wood - stilt performer

Roderick Poole - stilt performer



Testimonial

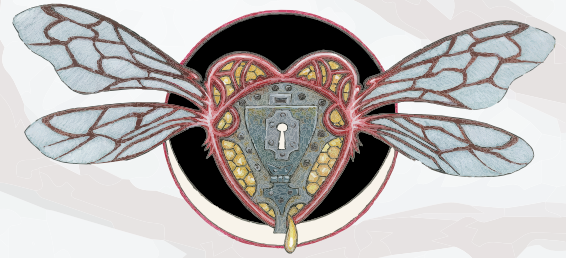
Eloise Wood and her team have been an integral part of the outdoor program for WinterWild in its first two iterations. She performed, choreographed, and contributed to the narratives of four large-scale works, and her team designed and constructed costumes, head-pieces, and props. This year, in particular, the work was astounding. It was inspiring, daring, wonderfully creative and the attention to detail throughout the whole process was exceptional. This work has left an enormous legacy for the culture of our small seaside town. I cannot wait to get to work on our next project together.

Roderick Poole, Director WinterWild Apollo Bay



WildHoney Performing Arts

Snapshot



About

WildHoney is a small, humming hive of designers, performers and makers based in the Otway Ranges. Drawing inspiration from the ancient roots of art and theatre, this team of visionary creatives conjures otherworldly stiltwalking acts, audacious performance projects, pop-up installations and collaborative outdoor community events.

To ride wild wings, and walk the edges...

For more info visit www.wildhoney.net.au

The Mission

To create performance works that fire the imagination, stretch the boundaries of reality, and shine wonderment into the hearts of humanity. To develop a rich and transformative arts culture in regional communities, where artists experience the beauty of collaboration and diversify their practices and self-expression.

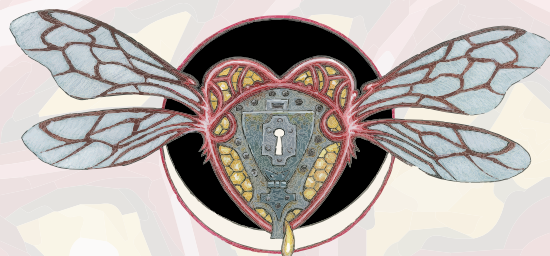


Offerings

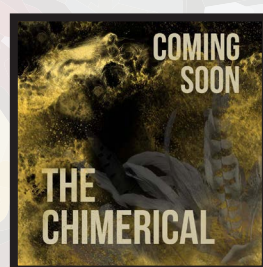
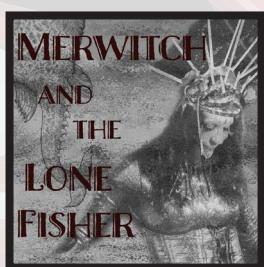
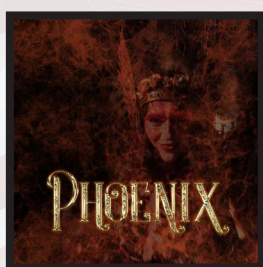
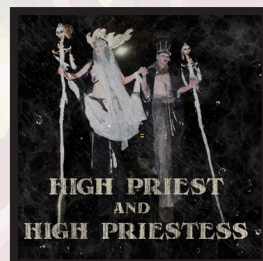
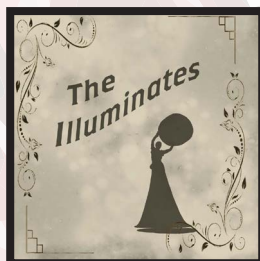
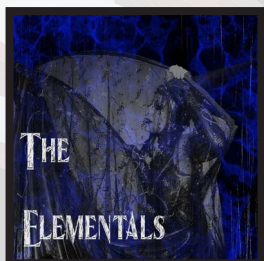
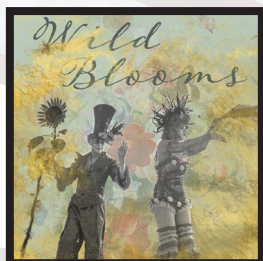
WildHoney offers an extensive range of roving mobile acts, large and small scale productions, collaborations, specialised workshops, and theatrical performance packages for artist in residence programs, festivals, events, and schools.



WildHoney Performing Arts



Mobile Acts



Collaborations, Community, Commissions



Birth of Light
Red Rock Regional Theatre
and Gallery, October 2019



Redemption
WinterWild Festival,
Apollo Bay, August 2019



The Sacrifice/Candescence
WinterWild Festival,
Apollo Bay, August 2018



enLIGHTen Me
I Have a Hall in my Heart,
Birregurra, April 2018



Phoenix Rising
WinterWild Festival,
Apollo Bay, August 2017



Bonfire
WinterWild Festival,
Apollo Bay, August 2017

