

WILDHONEY
PERFORMING ARTS



Press Kit

WildHoney is a humming hive of performers, artists
and designers based in the Otways, Victoria.

Bookings and Enquiries

Eloise Wood 0400 145 168

wildhoneyperformingarts@gmail.com



wildhoneyperformingarts

Green Woman - Solo Stiltwalking Act

Performance Description

“In meadows green, where wildflowers sway,
She weaves her spells, both night and day.
A creature of the woods, a sprite so sly,
She beckons you with a gleam in her eye.”

The Green Woman is a solo stilt-walking act that works well both day and night. With tangled hair of moss and ferns, she embodies the very essence of the wild feminine and nature spirits. Fall under her spell as she glides gracefully from bough to bough with her enchanting dance. Emerald leaf wings come to life after dusk and illuminate like a sea of jewels, reminding us to protect and cherish our precious natural world.



*Please note this act can include two Giant stiltwalking puppets on request.

Get in touch for more information.





Performance Biography

Green Woman was created as storyteller for ELEVATE, a magical project of hope and connection offering community workshops in stiltwalking, large-scale puppetry, storytelling, dance and pop-up performances across three locations in the Colac Otway Region, Victoria in 2022. The project was funded by Creative Victoria and Regional Arts Australia, and sponsored by Colac Otway Arts Trail.

Performance History

- 2024 - Solstice Search Party, Warrnambool, June, VIC
- Torquay Nightjar Festival, Torquay, January, VIC
- 2022 - FireFly Night Markets, Tarneit, June, VIC
- 2021 - Walking with Giants, Colac, April, VIC

Hive Artists

- Eloise Wood - Stilt Performer
- Hoya Wolfgang - Stilt Performer
- Roderick Poole - Stilt Performer
- Amanda Magan - Stilt Performer

Hive Creative Team

- Eloise Wood - Founder, Costume Designer, Creative Director and Choreographer
- Hoya Wolfgang - Founder, Props Designer and Maker
- Jen Farthing - Pattern Designer and Maker



Working With WildHoney - Mobile Act Stilt Requirements

Stilt Requirements

WildHoney performers are easy to work with and adaptable to a great range of environments. We walk comfortably in crowds, indoors and out, can squeeze through doorways, navigate a wide range of surfaces and tough it out in most weather.

Stilt Up

WildHoney works with tall stilts, and we often get asked how we get up and down. A trestle table will do the trick.

Height

WildHoney Stiltwalking Characters and Creatures measure anywhere from 2-3 metres in height inclusive of props. The Chimera puppet is 4.5 metres. When booking, please be mindful of your space, checking ceiling height, decor, outdoor environments, and any rigging locations to ensure a suitable setting for these unique performances.

Performance Area

When presenting WildHoney mobile acts, the performers need enough room to move comfortably between people and a large flat, dry area to walk in. If performing at night, please ensure there is an adequately lit pathway to and from the performance area.

Safety

WildHoney prioritises safety by providing in-house spotters for all performances. Maintaining a safe distance between performers and the public is crucial unless performers choose to interact with select audience members. The event organisers are responsible for hiring trained safety officers to ensure a secure environment for everyone involved.

Surface Requirements

The WildHoney stilt performers cannot perform on wet, slippery, muddy or deep sandy surfaces, and any sign of liquid on a glossy surface is extremely hazardous.

Steps

WildHoney stilt performers cannot walk up or down long flights of steps. Please make sure that the pathway between backstage and dressing rooms does not involve steps and can be avoided in the performance area.



Dressing Rooms

Male/female dressing rooms must be supplied as close to the performance area as possible. Whilst the rooms do not have to be high, they must be private, have access to power, lighting, drinking water, trestle tables, chairs, bin, heater/cooling if available, costume hanging rack, and close access to toilet facilities.

Green Room

A dedicated space for performers to relax when they take a break.

Rider

To be negotiated

Weather Alerts

The WildHoney stilt performers cannot perform in rain, extreme heat (34 degrees +) or gale force winds. WildHoney will be at the event (unless cancelled) and wait to be rescheduled (by negotiation) on the day of performance. If there is no possibility of performance (and those appearances are cancelled) WildHoney will invoice for 100% of the total fee.



Working With WildHoney -Mobile Acts Information

Non Verbal Street Theatre

WildHoney does not use spoken word but speak gibberish when the mood takes them. Movement and visual stimuli is a key technique of storytelling and communication making it accessible and super friendly to all walks of life.



Relaxed performances

WildHoney offers specially adapted performances for adults and children, who might benefit from a more relaxed experience, i.e. low stimulus, non-verbal. This type of performance specifically appeals to people with autism, communication disorders, learning difficulties, and dementia.



Audio and Live Sound

WildHoney mobile performances generally operate without sound however a pre-recorded soundtrack can be presented on request.



Stage Lighting

The costumes are designed with inbuilt lights for outdoor street performances and therefore don't require external lighting but can enhance the visual if available.

Performance Duration

WildHoney mobile acts are performed as 20-minute sets, with up to three sets available over a three-hour period. The performers take a break for a minimum of 20 minutes between sets.



Insurance

WildHoney has Public Liability Insurance.

Cost

WildHoney's mobile acts fees are variable and dependent on factors such as performance duration, number of performers, travel, accommodation, and per diems. Please contact us for a full price list or quote.



Mobile Acts and Stilt Requirements

WildHoney performers are easy to work with and adaptable to a great range of environments. We walk comfortably in crowds, indoors and out, can squeeze through doorways, navigate a wide range of surfaces and tough it out in most weather.

Stilt Up

WildHoney works with tall stilts and we often get asked how we get up and down. A trestle table will do the trick.

Height

WildHoney stiltwalking characters and creatures measure anywhere from 2-3 metres in height inclusive of props. The Chimera puppet is 4.5 metres. When booking, please be mindful of your space, checking ceiling height, decor, outdoor environments, and any rigging locations to ensure a suitable setting for these unique performances.

Performance Area

When presenting WildHoney mobile acts, the performers need enough room to move comfortably between people and a large flat, dry area to walk in. If performing at night, please ensure there is an adequately lit pathway to and from the performance area.

Safety

WildHoney prioritises safety by providing in-house spotters for all performances. Maintaining a safe distance between performers and the public is crucial unless performers choose to interact with select audience members. The event organisers are responsible for hiring trained safety officers to ensure a secure environment for everyone involved.

Surface Requirements

The WildHoney stilt performers cannot perform on wet, slippery, muddy or deep sandy surfaces, and any sign of liquid on a glossy surface is extremely hazardous.

Steps

WildHoney stilt performers cannot walk up or down long flights of steps. Please make sure that the pathway between backstage and dressing rooms does not involve steps and can be avoided in the performance area.

Dressing Room Requirements

Male/female dressing rooms must be supplied as close to the performance area as possible. Whilst the rooms do not have to be high, they must be private, have access to power, lighting, drinking water, trestle tables, chairs, bin, heater/cooling if available, costume hanging rack, and close access to toilet facilities.

Weather Alerts

The WildHoney stilt performers cannot perform in rain, extreme heat (34 degrees +) or gale force winds. WildHoney will be at the event (unless cancelled) and wait to be rescheduled (by negotiation) on the day of performance. If there is no possibility of performance (and those appearances are cancelled) WildHoney will invoice for 100% of the total fee.

Green Room

A dedicated space for performers to relax when they take a break.

Rider

Details to be discussed separately.



To ride wild wings, and walk the edges...

About WildHoney

WildHoney was born out of the Otways in 2017. It is a small, magical, humming hive of creatives that produces highly visual and interactive acts for street theatre, workshops in wonderment and outdoor performances. Each member brings a unique and high level of skills, and together they share a deep commitment to creating wild beauty and manifestation of the divine. WildHoney was founded by creatives Eloise Wood and Hoya Wolfgang and has become a unique brand and wonderful way to showcase and develop the talent of the Otways.

For more info visit wildhoney.net.au

The Dream

To develop a rich and transformative arts culture in regional communities, where artists experience the beauty of creative collaboration and diversify their practices and self-expression. To create performance works that stretch the imagination, push the boundaries of reality and shine wonderment into the hearts of humanity.

Offerings

WildHoney offers an extensive range of roving mobile acts, large and small-scale productions, collaborations, theatrical performance packages, and specialised workshops for artists in residence programs, festivals, events, and schools.

Also - corporate events meet and greet, media launches, and photoshoots.

Workshops in Wonderment

Interactive Workshops designed to enhance Creativity, Imagination, Self-expression and Joy.



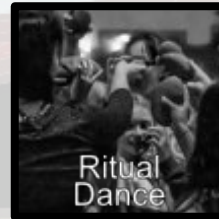
Stiltwalking



Creative Dance



Mask Making



Ritual Dance



Storytelling



Womens Workshops

Workshops can be tailored to any age group

Mobile Acts

Interactive and illuminated characters to add a shimmer or shine to your event or festival.



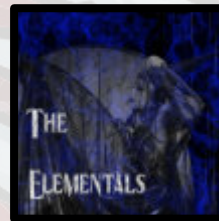
The Chimera and the Keeper



green woman



The Illuminates



THE ELEMENTALS



Wild Blooms



Sculptures

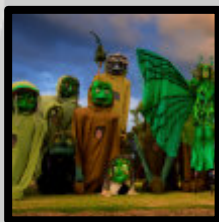
Fire Effigy & Scrying Pool

Creations

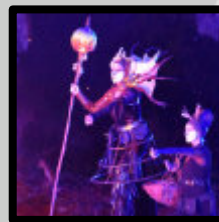
Curated Production Packages for Events, Parades and Festivals



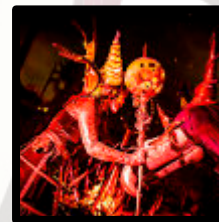
Sirens



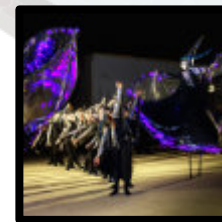
ELEVATE - Walking with Giants



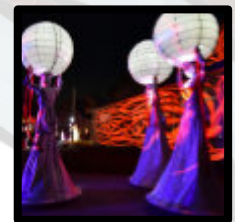
The Chimerical



The Chimera & The Wishing Tree



Birth Of Light



enLighten Me



WildHoney acknowledges the Gadubanud and Gulidjan Country and Peoples of the lands upon which we live and work. Country that has afforded us the privilege to draw inspiration from the deep damp luscious valleys and sacred places scattered throughout this wild temperate rainforest. We are beneficiaries of all that grows here that not only feeds us physically but allows us to pursue our creative practice with nourished souls. We pay our gratitude and respects to the Local Aboriginal Community and to any Aboriginal people viewing this document.