

WILDHONEY
PERFORMING ARTS



The Illuminates



Press Kit

WildHoney is a humming hive of performers, artists
and designers based in the Otways, Victoria.

Bookings and Enquiries

Eloise Wood 0400 145 168

wildhoneyperformingarts@gmail.com



wildhoneyperformingarts

The Illuminates Duo & Trio Mobile Stiltwalking Act

Performance Description

Weaving star light on a sea of dreams
The Illuminates cast an enchantment of wonder and delight
Turn them on, see the glow of their hearts
As moons rise, set, and eclipse their night flight.



The Illuminates is a roving two or three-person sculptural stilt performance that can be performed day or night, indoors or out and to a wide demographic ranging from children to adults. The spectacular costumes were inspired by European street theatre and reference celestial lanterns. The audience is mesmerised as these wondrous, otherworldly figures glide seemingly on air in graceful formations, and their hearts glow red and become illuminated. The performance works beautifully during daylight hours but really comes alive after sunset with inbuilt LED lighting accentuating the costumes and drawing audience members from afar.



The Illuminates - Performance Biography

The Illuminates were created for the Ballyhoo Ball, enLIGHTen Me Birregurra Project, funded by Regional Arts Victoria in 2018. WildHoney founders, Eloise and Hoya, were invited to collaborate, design, and present a performance at this part-costume ball/part-live art event, working in conjunction with projection artist Craig Walsh. The works were developed under the theme, "I have a hall in my heart." Eloise conceptualised and brought to life "The Illuminates," a 15-minute street performance featuring stiltwalkers and live musicians, marking the debut of the newly formed WildHoney Hive. The event engaged a wandering audience, with a sold-out crowd of over 1,000 attendees and a diverse lineup of 40 acts, including local and regional artists.

Performance History

- 2025 - Port Fairy Folk Festival, March, VIC
- 2024 - Solstice Search Party Warrnambool, June, VIC
 - Torquay Nightjar Festival, The Illuminates, January, VIC
- 2023 - Light up Camperdown Lantern Parade, December, VIC
 - FireFly Night Market, Tarneit, June, VIC
- 2022 - Geelong Christmas Night Market, November, VIC
- 2020 - Light Up Apollo Bay, The Illuminates, November, VIC
- 2019 - Torquay Nightjar Festival, The Illuminates, January, VIC

Hive Creatives

Eloise Wood - founder, concept designer, creative director, choreographer

Hoya Wolfgang - founder, props designer and maker, performer, musician, sound design

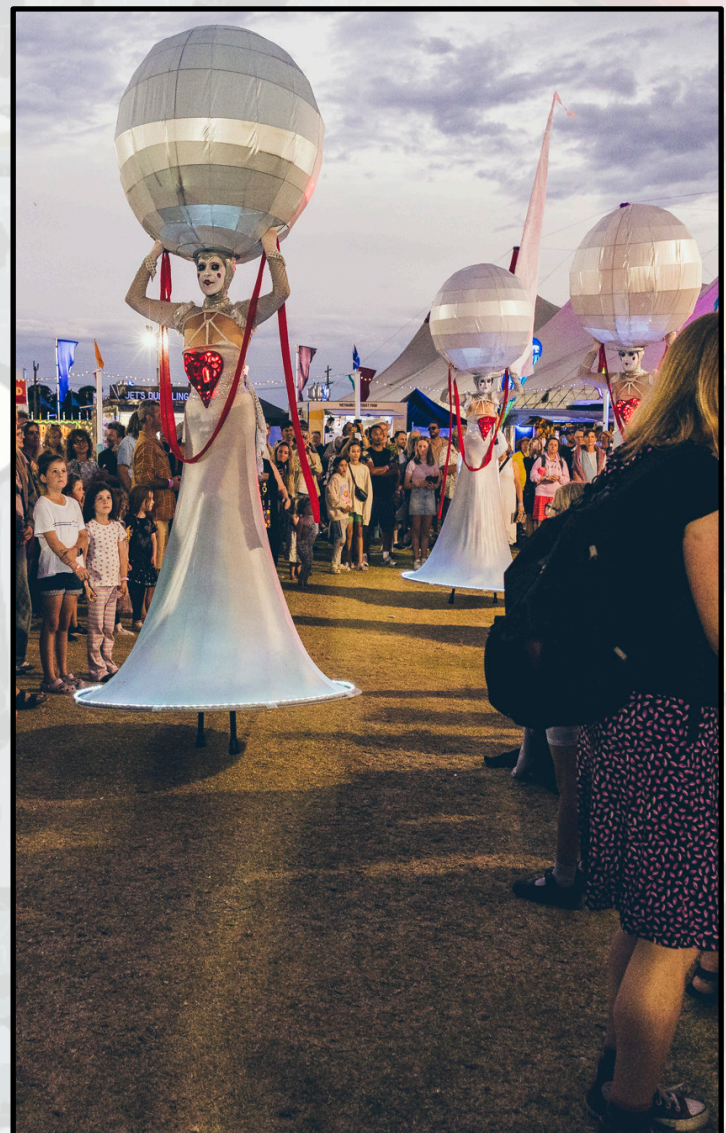
Jen Farthing - creative garment designer and maker

Hive Performers

AmandaMagan - stilt performer

Eloise Wood - stilt performer

Liza Freddi - stilt performer



Working With WildHoney - Mobile Acts Information

Non Verbal Street Theatre

WildHoney does not use spoken word but speak gibberish when the mood takes them. Movement and visual stimuli is a key technique of storytelling and communication making it accessible and super friendly to all walks of life.

Relaxed Performances

WildHoney offers specially adapted performances for adults and children who might benefit from a more relaxed experience, i.e. low stimulus, non-verbal. This type of performance specifically appeals to people with autism, communication disorders, learning difficulties, and dementia.

Audio and Live Sound

WildHoney mobile performances generally operate without sound however a pre-recorded soundtrack can be presented on request.

Stage Lighting

The costumes are designed with inbuilt lights for outdoor street performances and therefore don't require external lighting but can enhance the visual if available.

Performance Duration

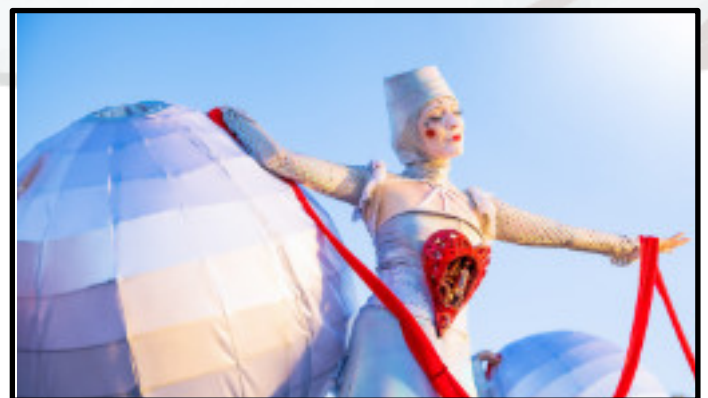
WildHoney mobile acts are performed as 20-minute sets - this is flexible and can be tailored and repeated throughout the event. The performers take a break for a minimum of 20 minutes between sets.

Insurance

WildHoney has Public Liability Insurance.

Cost

WildHoneys mobile acts fees are variable and dependent on factors such as performance duration, number of performers, travel, accommodation, and per diems. Please contact us for a full price list or quote.



Working With WildHoney - Mobile Act Stilt Requirements

Stilt Requirements

WildHoney stilt performers are easy to work with and adaptable to a great range of environments. We walk comfortably in crowds, indoors and out, can squeeze through doorways, navigate a wide range of surfaces and tough it out in most weather.

Stilt Up

WildHoney works with tall stilts, and we often get asked how we get up and down. A trestle table will do the trick.

Height

WildHoney Stiltwalking Characters and Creatures measure anywhere from 2-3 metres in height inclusive of props. The Chimera puppet is 4.5 metres. When booking, please be mindful of your space, checking ceiling height, decor, outdoor environments, and any rigging locations to ensure a suitable setting for these unique performances.

Performance Area

When presenting WildHoney mobile acts, the stilt performers need enough room to move comfortably between people and a large flat, dry area to walk in. If performing at night, please ensure there is an adequately lit pathway to and from the performance area.

Safety

WildHoney prioritises safety by providing an in-house spotter for all performances. Maintaining a safe distance between performers and the public is crucial unless performers choose to interact with select audience members. The event organisers are responsible for hiring a trained safety officer for large events to ensure a secure environment for everyone involved.

Surface Requirements

The WildHoney stilt performers cannot perform on wet, slippery, muddy or deep sandy surfaces, and any sign of liquid on a glossy surface is extremely hazardous to stilt walkers.

Steps

WildHoney stilt performers cannot walk up or down long flights of steps. Please make sure that the pathway between backstage and dressing rooms does not involve steps and can be avoided in the performance area.



Dressing Rooms

Male/female dressing rooms must be supplied as close to the performance area as possible. Whilst the rooms do not have to be high, they must be private, have access to power, lighting, drinking water, trestle tables, chairs, bin, heater/cooling if available, costume hanging rack, and close access to toilet facilities.

Rider

To be negotiated.

Weather Alerts

The WildHoney stilt performers cannot perform in rain, extreme heat (34 degrees +) or gale force winds. WildHoney will be at the event (unless cancelled) and wait to be rescheduled (by negotiation) on the day of performance. If there is no possibility of performance (and those appearances are cancelled) WildHoney will invoice for 100% of the total fee.



Full Production With Live Musicians

Performance Description

Celestial beings descend to earth and are discovered by an eccentric inventor who studied the stars and foresaw their arrival. Bathed in starlight they mirror the planetary constellation moving in graceful formation, distant and untouchable. The inventor devises a way to give them life and connects his Illuminator contraption to their silent hearts. As the illuminator whirs and vibrates, they become ecstatic, and their hearts glow and start beating.

In an animated and joyous climax, they dance their awakened hearts.

This show is designed for a stand-up or sit-down audience, or as a pop-up theatre piece at festivals.

Cast - 3 x stilt performers, 2 x musicians, sound accompaniment of electric cello and guitar.

Tech Specs - stage lighting, PA, and speakers.

Running time -15 mins.



Testimonial

“What I love about working with Elle Wood and her team is their passion and dedication to making performance art that transforms a show into a truly magical and memorable production. Their commitment to Birregurra Hall Ballyhoo was astounding and they worked seamlessly with our cast and crew to entwine their performance into the narrative of the story we were trying to tell. From their costumes to their supporting musicians, every detail was elegant and spectacular. They are professional, caring and inspirational to work with. I would highly recommend you work with Elle and her team.”

Fiona Branschied

enLighten Me

Birregurra Arts Project Manager



To ride wild wings, and walk the edges...

About WildHoney

WildHoney was born out of the Otways in 2018. It is a small, magical, humming hive of creatives that produces highly visual and interactive acts for street theatre, workshops in wonderment and outdoor performances. Each member brings a unique and high level of skills, and together they share a deep commitment to creating wild beauty and manifestation of the divine. WildHoney was founded by creatives Eloise Wood and Hoya Wolfgang and has become a unique brand and wonderful way to showcase and develop the talent of the Otways.

For more info visit wildhoney.net.au

The Mission

To develop a rich and transformative arts culture in regional communities, where artists experience the beauty of creative collaboration and diversify their practices and self-expression.
To create performance works that stretch the imagination, push the boundaries of reality and shine wonderment into the hearts of humanity.

Offerings

WildHoney offers an extensive range of roving mobile acts, large and small-scale productions, collaborations, theatrical performance packages, and specialised workshops for artist-in-residence programs, festivals, events, and schools.
Also - corporate events meet and greet, media launches, and photoshoots.

Workshops in Wonderment - tailored to any age group and abilities

Interactive Workshops designed to enhance creativity, imagination, self-expression and joy.



Stiltwalking



Creative Dance



Mask Making



Lantern Making



Storytelling



Womens Workshops

Mobile Acts

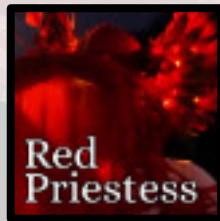
Interactive and illuminated characters to add a shimmer or shine to your event or festival...



The Chimera and the Keeper



green woman



Red Priestess



THE ELEMENTALS



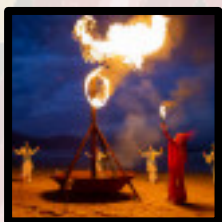
Wild Blooms



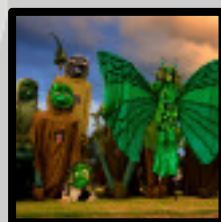
Phoenix

Creations

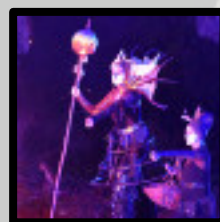
Curated Production Packages for Events, Parades and Festivals



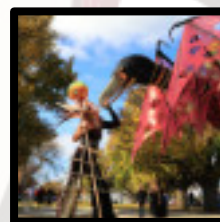
Sirens



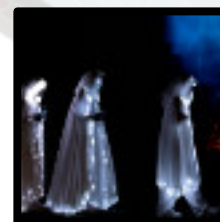
ELEVATE -
Walking with Giants



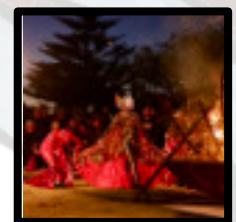
The Chimerical



The Chimera & The
Wishing Tree



Winter Dream



Phoenix & The
Flames



WildHoney acknowledges the Gadubanud and Gulidjan Country and Peoples of the lands upon which we live and work. Country that has afforded us the privilege to draw inspiration from the deep damp luscious valleys and sacred places scattered throughout this wild temperate rainforest. We are beneficiaries of all that grows here that not only feeds us physically but allows us to pursue our creative practice with nourished souls. We pay our gratitude and respects to the Local Aboriginal Community and to any Aboriginal people viewing this document.